

Argomenti di tesi interne

Dove: Laboratorio Fisica Stato Solido

Quando: a partire dal 1.1.2019

Durata: full time: 9 mesi

Competenze necessarie: Lab. Fisica Materia; Fisica Stato Solido

Argomenti: Spettroscopia fotoelettronica

Outcomes: Tecniche ultra alto vuoto, XPS, metodi di caratterizzazione

Interazioni con: INRiM, NIS

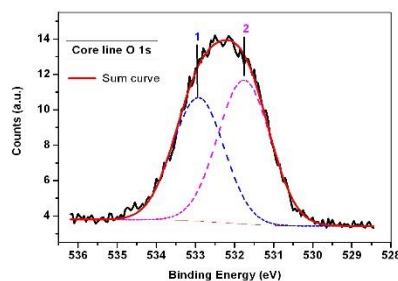
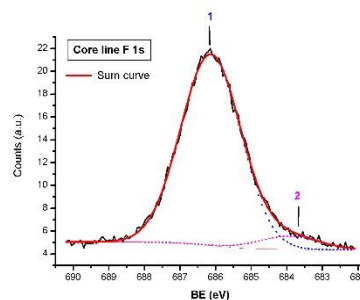
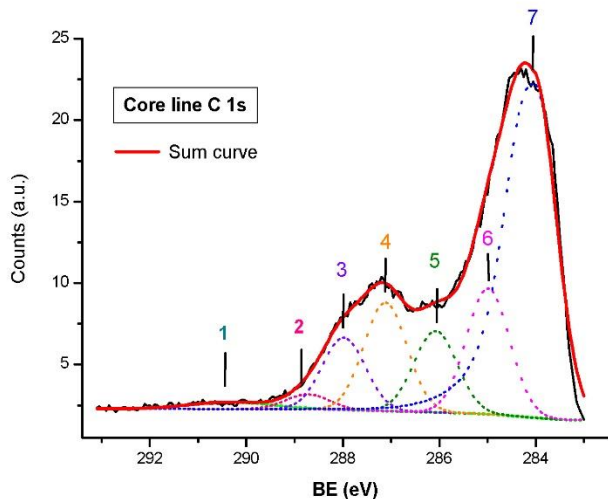
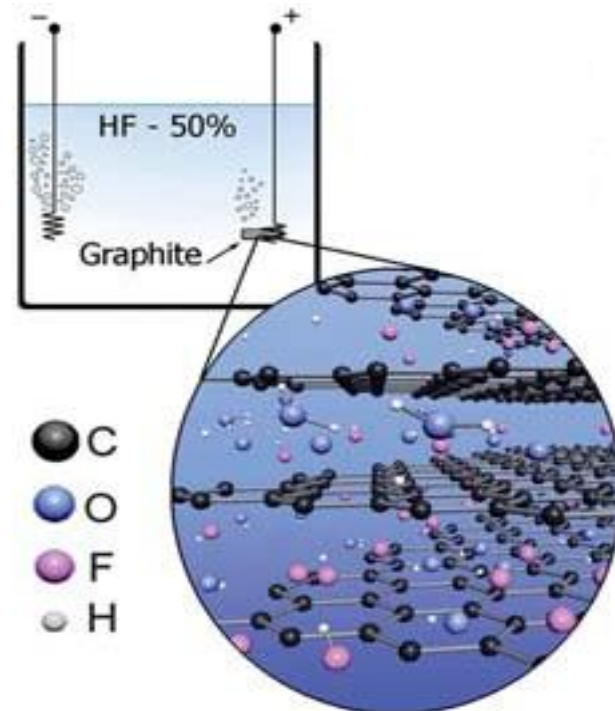
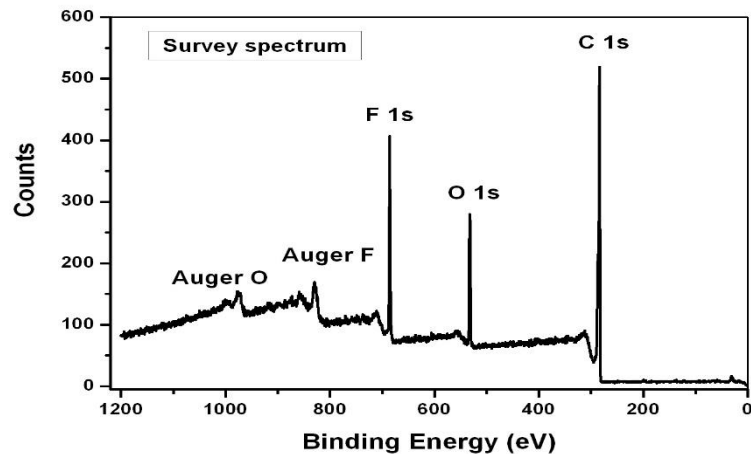
www.nis.unito.it

Laboratori presso centro dell'Innovazione,
via Quarello 15

www.inrim.it



Misure XPS: grafite fluorurata



Core lines	BE (eV)	FWHM (eV)	CONC. % at.	Assignment
C1s_1	290.33	2.00	1.21	Plasmonic peak
C1s_2	288.73	1.05	1.35	C-F ionic bond
C1s_3	287.98	1.05	6.55	O-C-O
C1s_4	287.12	1.05	9.84	C-F semi-ionic bond
C1s_5	286.08	1.05	7.38	C-O-C
C1s_6	284.99	1.05	11.41	C-H, C*-CF
C1s_7	284.02	1.05	38.54	Graphite
O1s_1	532.92	1.55	6.16	O-C-O
O1s_2	531.75	1.58	7.36	C-O-C
F1s_1	686.14	1.98	9.54	C-F semi-ionic bond
F1s_2	683.94	1.98	0.65	C-F ionic bond

Argomenti di tesi interne

Dove: Dipartimento di Fisica, Laboratori Nazionali di Legnaro

Quando: a partire dal 1.1.2019

Durata: full time: 9 mesi

Competenze necessarie: Lab. Fisica Materia; Fisica Stato Solido

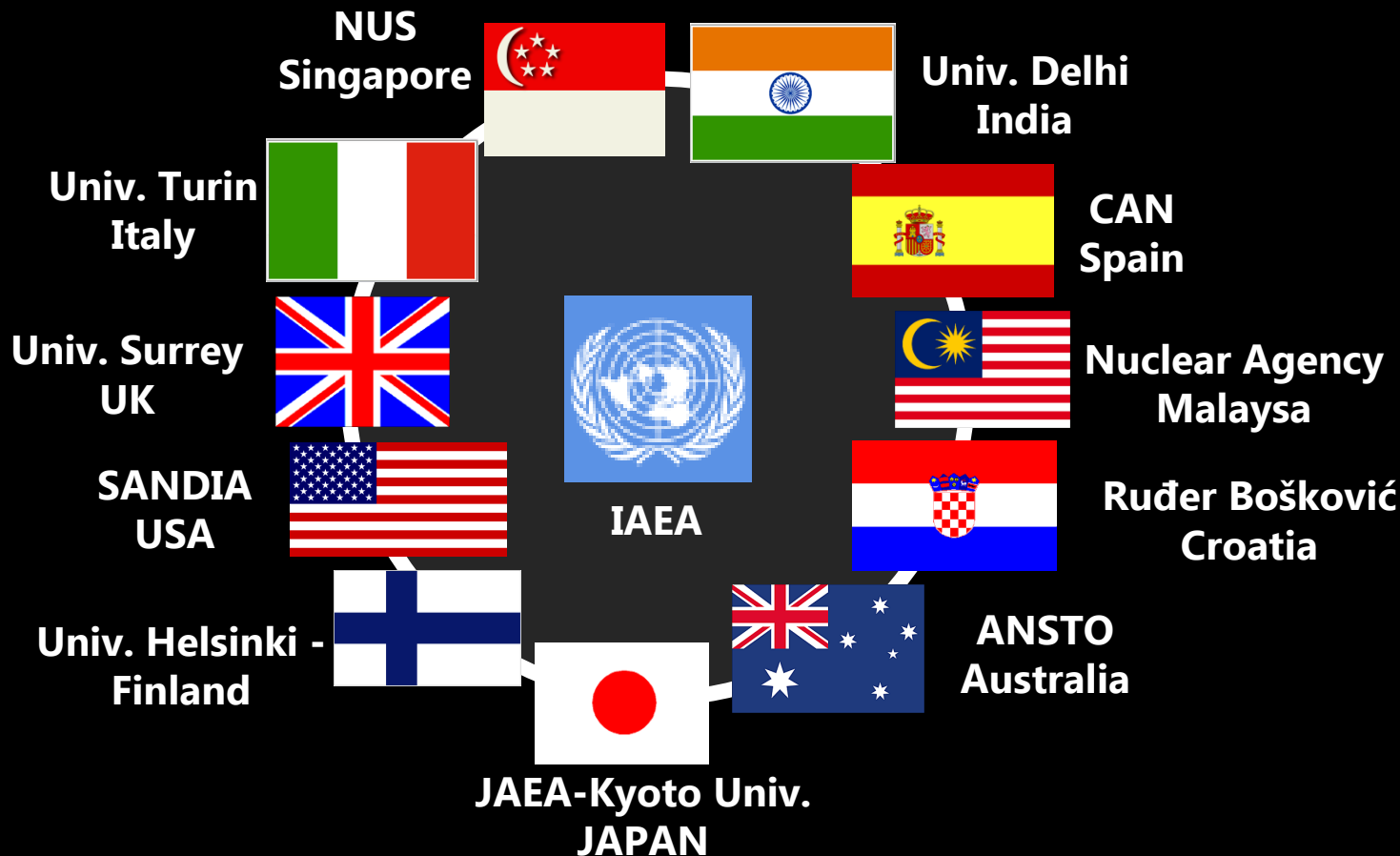
Argomenti: Micro-spettroscopia ionica, deterministic ion implantation

Outcomes: Acceleratori ionici, tecniche IBA

Interazioni con: INFN, Ruder Boskovic Institute Zagreb, Leipzig Univ., IAEA

“Utilization of ion accelerators for studying and modeling of radiation induced defects in semiconductors and insulators”

COOPERATION AND MUTUAL UNDERSTANDING LEAD TO GROWTH AND GLOBAL ENRICHMENT



Argomenti di tesi esterne

Dove: INRiM

Quando: a partire da 01.12.2018

Durata: full time: 9 mesi

Competenze necessarie: Lab. Fisica Materia; Fisica Stato Solido

The image shows a screenshot of the INRiM website. At the top left is the INRiM logo, which consists of a dark blue square with the letters 'INRiM' in white, followed by the text 'ISTITUTO NAZIONALE DI RICERCA METROLOGICA' in a smaller font. To the right of the logo is a search bar with the text 'Google Ricerca' and a magnifying glass icon. Further right are a user profile icon and a language selection button labeled 'EN'. Below the header is a navigation menu with five items: 'L'ENTE', 'RICERCA & SVILUPPO', 'FORMAZIONE', 'SERVIZI', and 'COMMUNITY'. The main content area features a large, colorful wheel of SI units. The wheel is divided into segments for the base units: kg (red), m (orange), s (yellow), A (green), K (blue), mol (purple), and cd (dark blue). The central part of the wheel is labeled 'SI'. Below the wheel, there is a dark blue box with the text 'LE UNITÀ DI MISURA' and a subtitle 'L'INRiM contribuisce a realizzare le unità di misura del Sistema Internazionale'. The background of the main content area is dark with various SI unit symbols scattered around.

http://fisica.campusnet.unito.it/do/documenti.pl/Show?_id=ehmc

Argomenti di tesi esterne

Dove: Aziende nel territorio

Quando: a partire da 01.01.2019

Durata: full time: 9 mesi

Competenze necessarie: corsi caratterizzanti.

Fonderie 2a – Santena



TRIOM - Cambiano



ITT - Barge (CN)

ITT Friction Technologies
Barge (CN, Italy)
R&D Laboratory

OLSA – Rivoli

OLSA OPTICAL
LIGHTING
SYSTEMS
AUTOMOTIVE



CRF – Torino/Orbassano

